

## Make a Gas Mask and Carry Box



## World War Two – Evacuees

### The Risk Of Poison Gas

World War One had seen the use of a terrible new weapon called Chlorine Gas. Even if it didn't kill you it would cause terrible burns on your skin and eyes, cause choking and vomiting, and if breathed in would damage your lungs permanently.

The government were very worried that Germany would use gas against both soldiers and civilians in World War Two. Even more toxic poisons were being developed, and people feared that the bombs being dropped on Britain could contain gas as well as explosives.

In the end, Germany never did mount a gas attack on Britain, but people lived with the threat for 6 years.

Everyone was issued with a gas mask, and carried it at all times. At home, at work, at school, travelling, in bed – if you didn't keep your gas mask next to you every minute of the day, you might fall victim to the terrible effects of poison gas.



## World War Two – Evacuees

There were different kinds of gas masks for different people.

Special masks were made for adults, children, babies, and even dogs and horses!



*2) Dogs also needed protection but they only got masks if they were on the front lines.*



*3) Disney made a Gas Mask! It was supposed to look like Mickey Mouse*



*1) A nurse showing a special gas mask for babies.*



*4) A gas mask for a war horse.*

## World War Two – Evacuees

# Children's Gas Masks

Gas masks for children had a little nose balloon, that flapped about as you breathed in and out. The idea was to encourage children to wear them by making it more fun.

Do you think that would work?

You're going to make your own gas mask and carry case so that you can be safe.



## World War Two – Evacuees

### For the Gas Mask

If you want your gas mask to fit into its box, you'll need to make the headpiece from cloth so that it can be folded up. Use **felt** instead of **cardboard** for the headpiece.

If you simply want to wear your mask, you can use cardboard.

#### You will need:

- The template attached
- Scissors or a craft-knife
- A ruler or tape measure
- A 2 litre plastic, round soft-drink bottle (not square)
- A4 thin card x4. (Cereal packets are ideal)
- Double sided sticky tape or glue
- Felt fabric (optional)
- A balloon (optional)
- Paint or coloured pencils

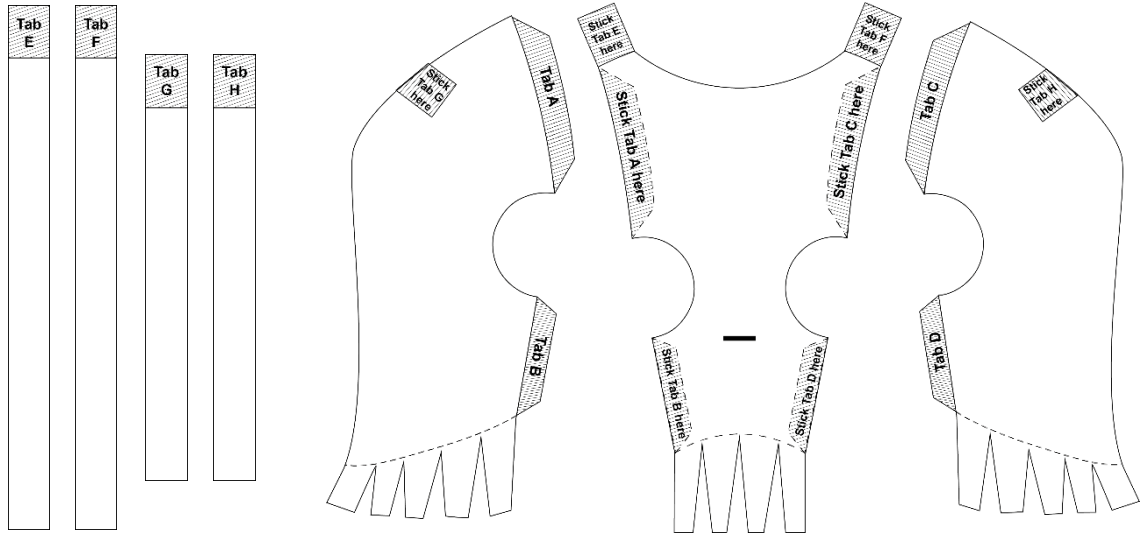


## World War Two – Evacuees

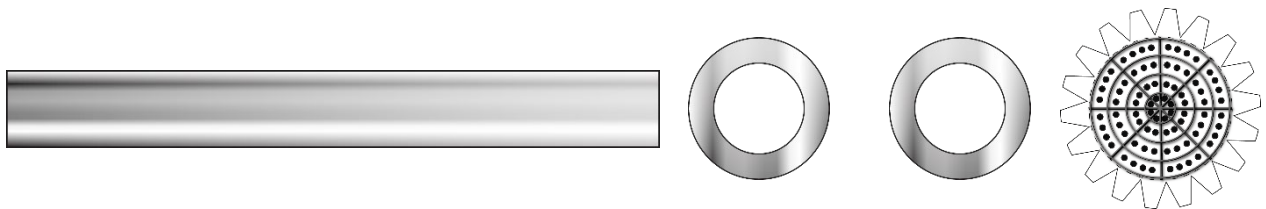
### Instructions:

- 1) **If you are using card**, stick all the templates to the card and cut out the pieces.

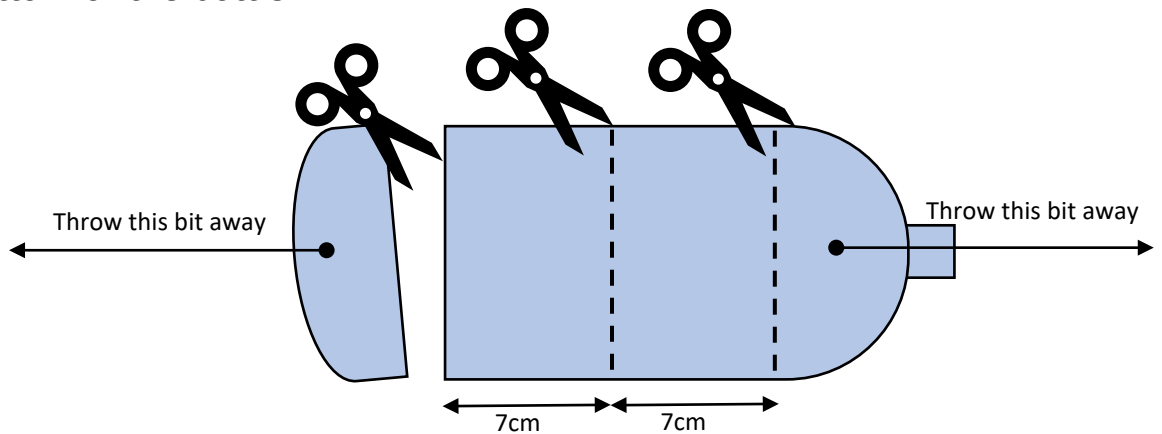
**If you are using felt**, cut these pieces out of felt:



Cut these pieces out of card:

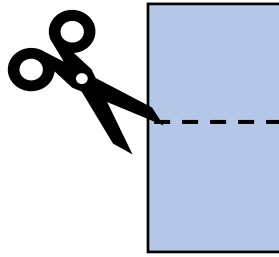


- 2) Take the 2L plastic bottle, cut off the bottom and throw that away.
- 3) Using the ruler, and scissors, cut two 7cm wide strips from the bottom of the bottle.

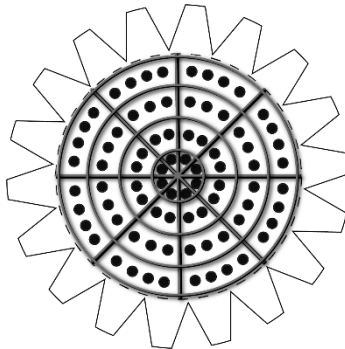


## World War Two – Evacuees

- 4) Take one 7cm strip and cut across **one** side so that you can open the strip up. It will still curve naturally. Put the second strip aside for the moment.




- 5) Take the **filter cap**:



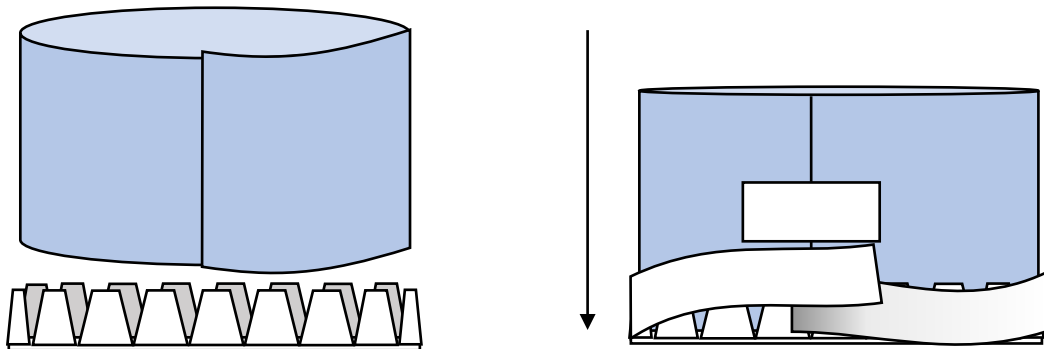
Carefully fold each of the tabs back on itself so that it looks like this:



Pattern on  
this side

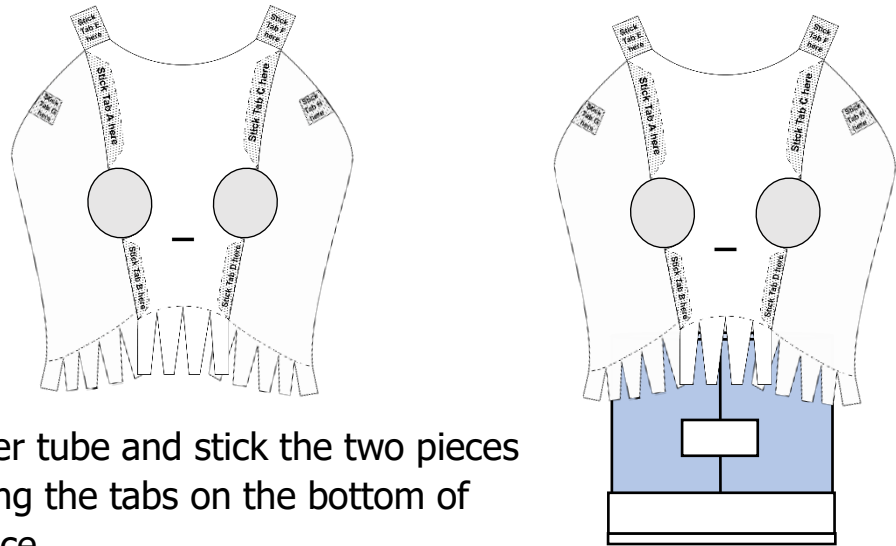


- 6) Take the **plastic strip** that you just cut, and make it into a tube that fits into the filter cap. Push the tube into the cap and tape it at the right size. This is the **filter tube**.



## World War Two – Evacuees

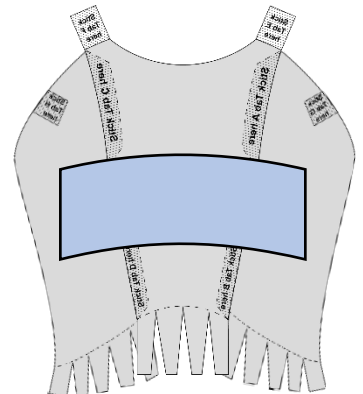
- 7) Take the head piece templates and stick them together as they are marked. You will need to curve the pieces slightly to get them to fit. This shapes the face.



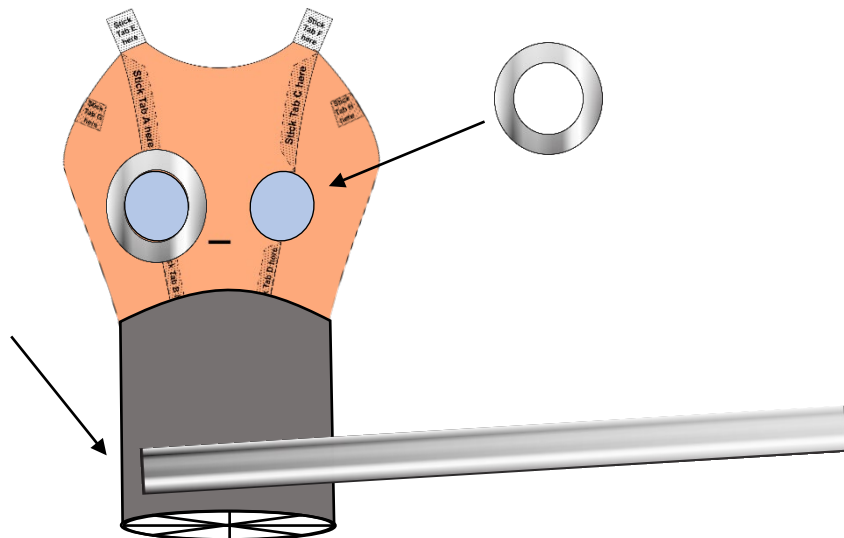
- 8) Take the filter tube and stick the two pieces together using the tabs on the bottom of the head piece.

- 9) Wrap the filter tube and joints in strong tape to make sure they stay in place.

- 10) Turn the mask over so that you are working on the inside. Take the second plastic strip that you cut earlier, and tape it across both the eye holes. Cut it down if it's too long. If it is too curly you can flatten it out a bit by carefully bending it back the other way a few times before you stick it down.



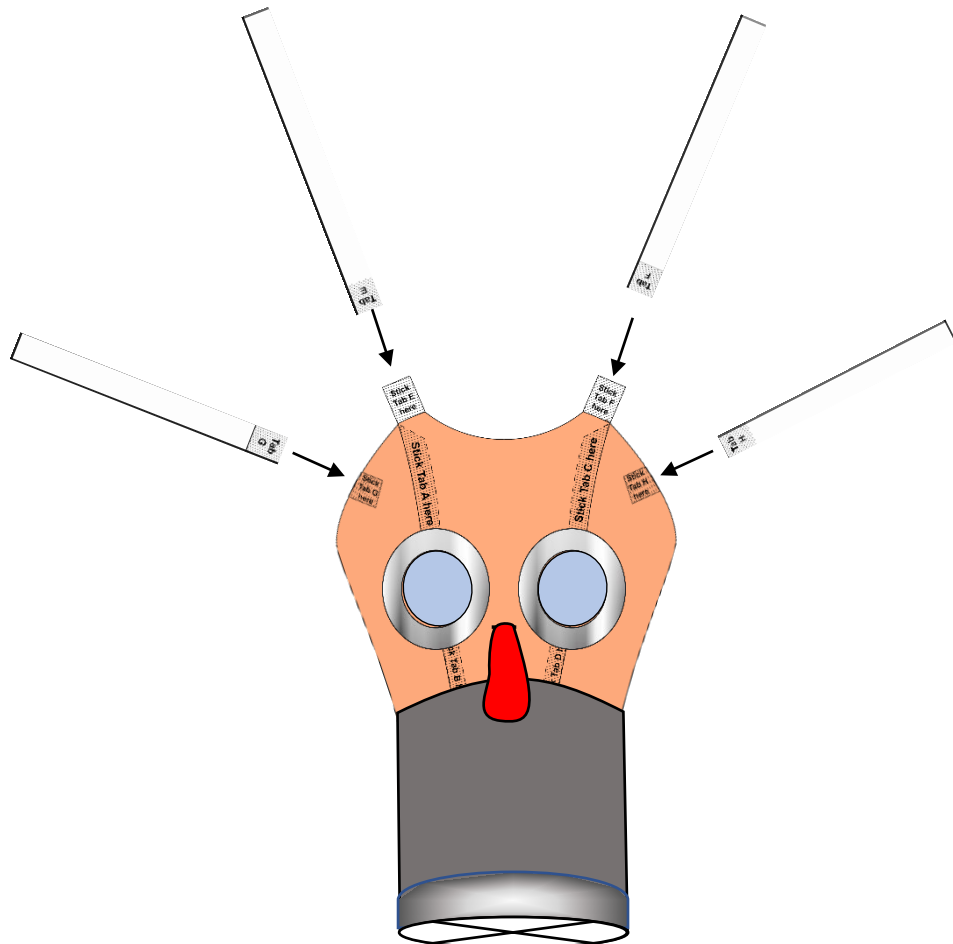
- 11) Turn your mask back over.  
If you are not using felt, and you want to paint your mask, do it now. When dry, stick the silver eye pieces over the eye holes, and wrap the silver edging around the filter tube.



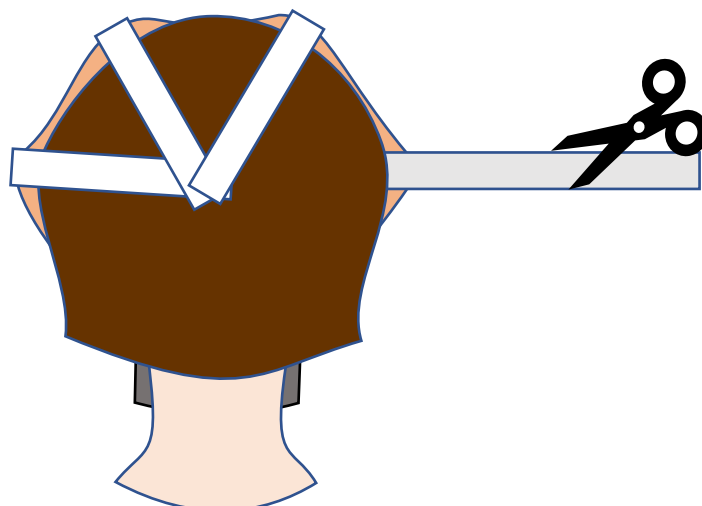


## World War Two – Evacuees

- 12) Carefully cut the small slit in between the eyeholes. Push the neck of the balloon through the slit and tape it across the back of the mask.
- 13) Now take the four straps and attach the tabs as shown.



- 14) Put the mask on so that you can measure how long you need the straps. Ask a friend to cut and tape them to the correct length.



## Congratulations!

# You have finished your gas mask

Now practice putting it on and taking it off as children did during the war.

## PRACTISE PUTTING ON YOUR RESPIRATOR



1. Hold your breath. (To inhale gas may be fatal.)
2. Hold mask in front of face, thumbs inside straps.
3. Thrust chin well forward into mask. Pull straps as far over head as they will go.
4. Run finger round face-piece taking care head-straps are not twisted.

### MAKE SURE IT FITS

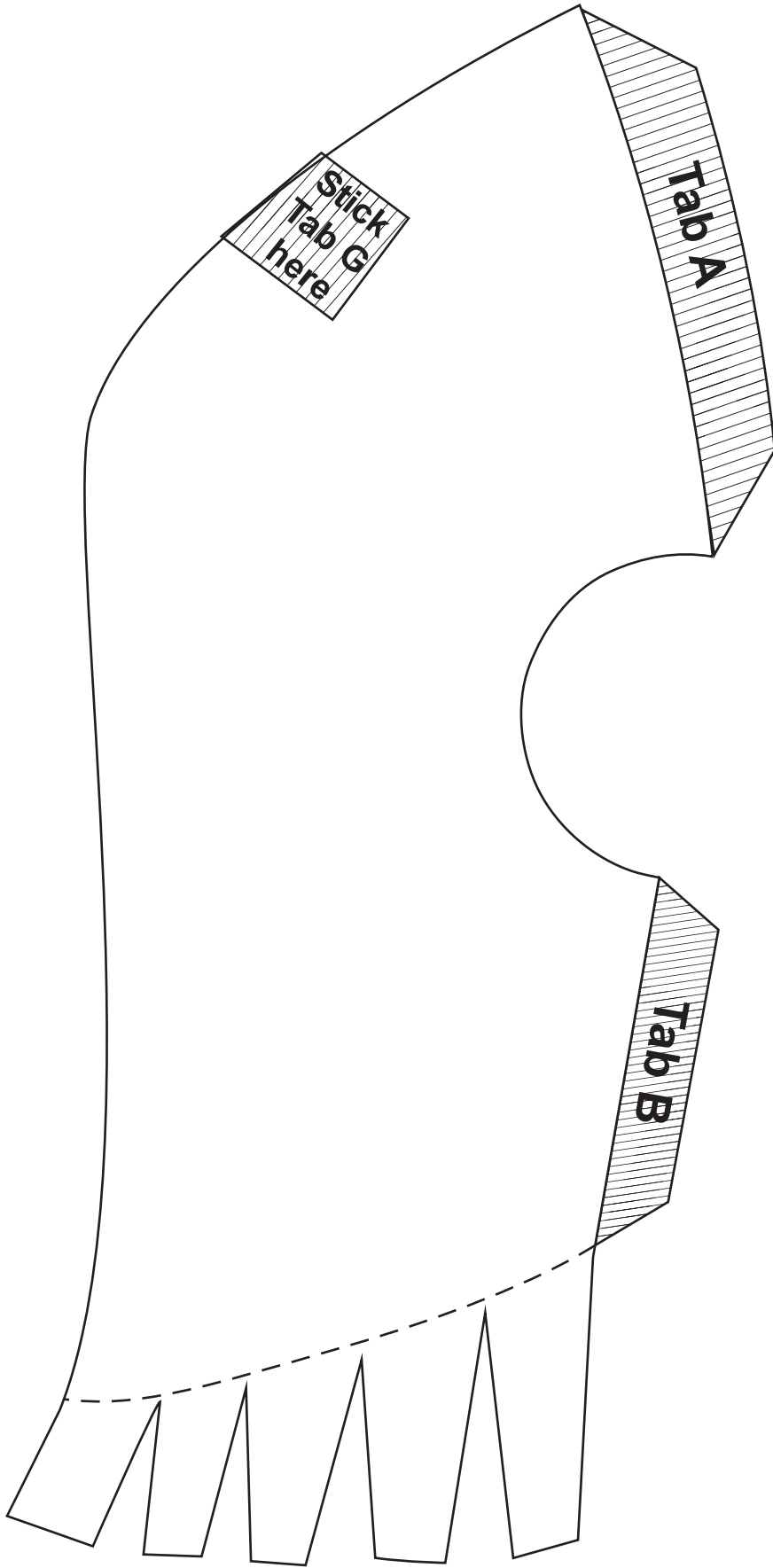
See that the rubber fits snugly at sides of jaw and under chin. The head-straps should be adjusted so that they hold the mask firmly on the face. To test for fit, hold a piece of soft, flat rubber or of soft tissue paper to end of mask and breathe in. The rubber or paper should stick.



## YOUR RESPIRATOR

COMPLETELY PROTECTS YOUR EYES, NOSE,  
THROAT AND LUNGS AGAINST ALL WAR GASES  
ALWAYS KEEP YOUR RESPIRATOR  
SAFE, CLEAN AND EFFICIENT

IF YOU SUSPECT GAS, AT ONCE PUT ON  
YOUR RESPIRATOR AND GET UNDER COVER



Stick  
Tab G  
here

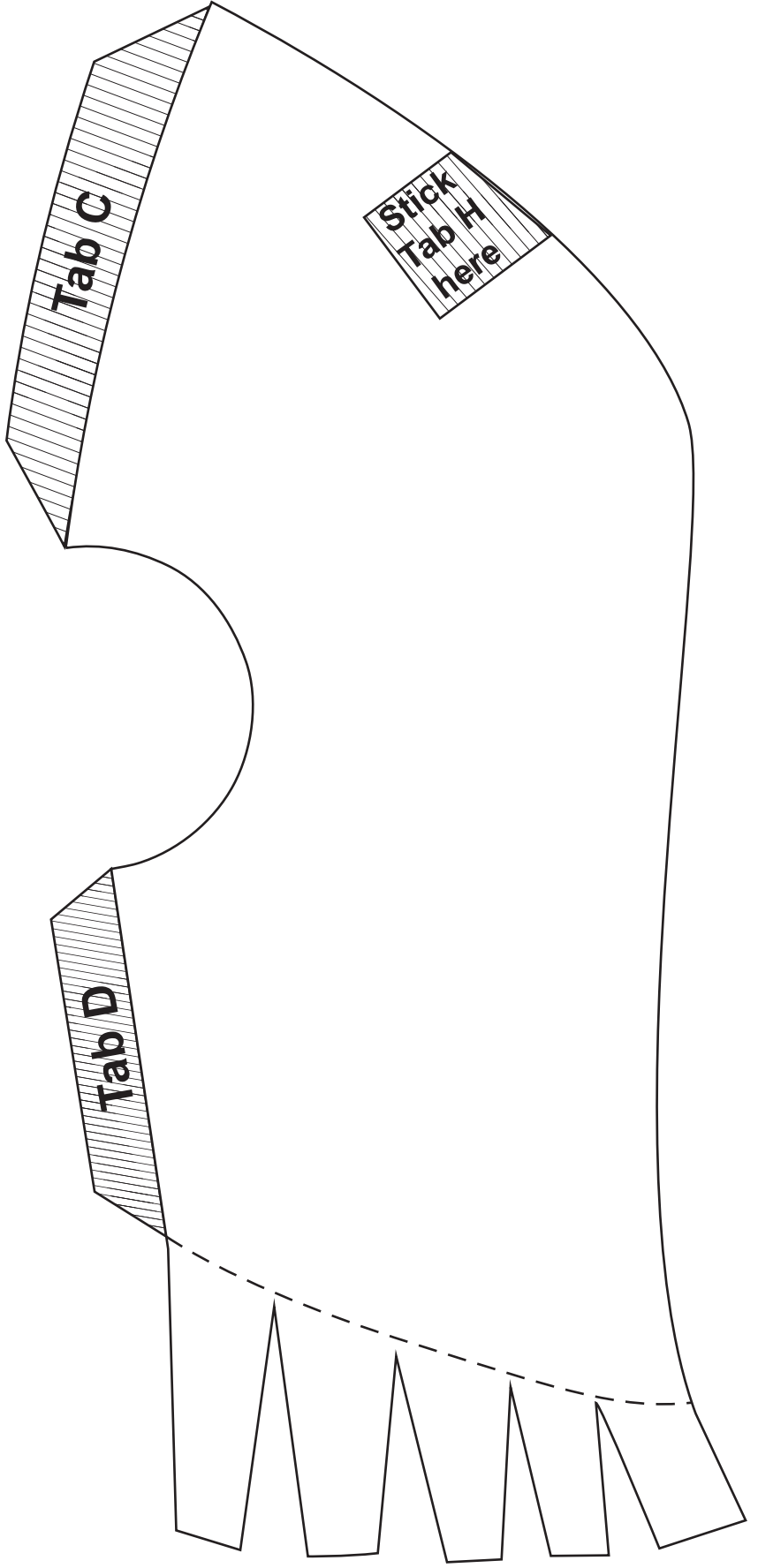
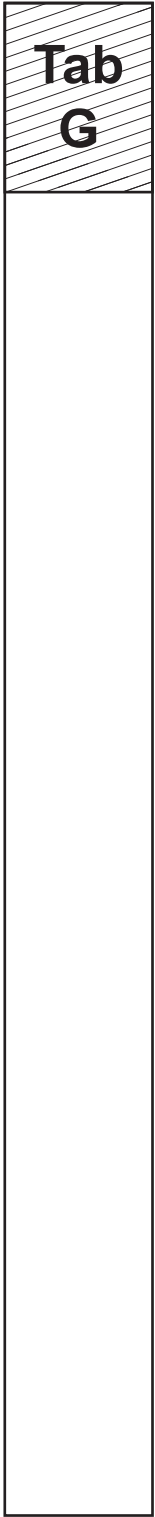
Tab A

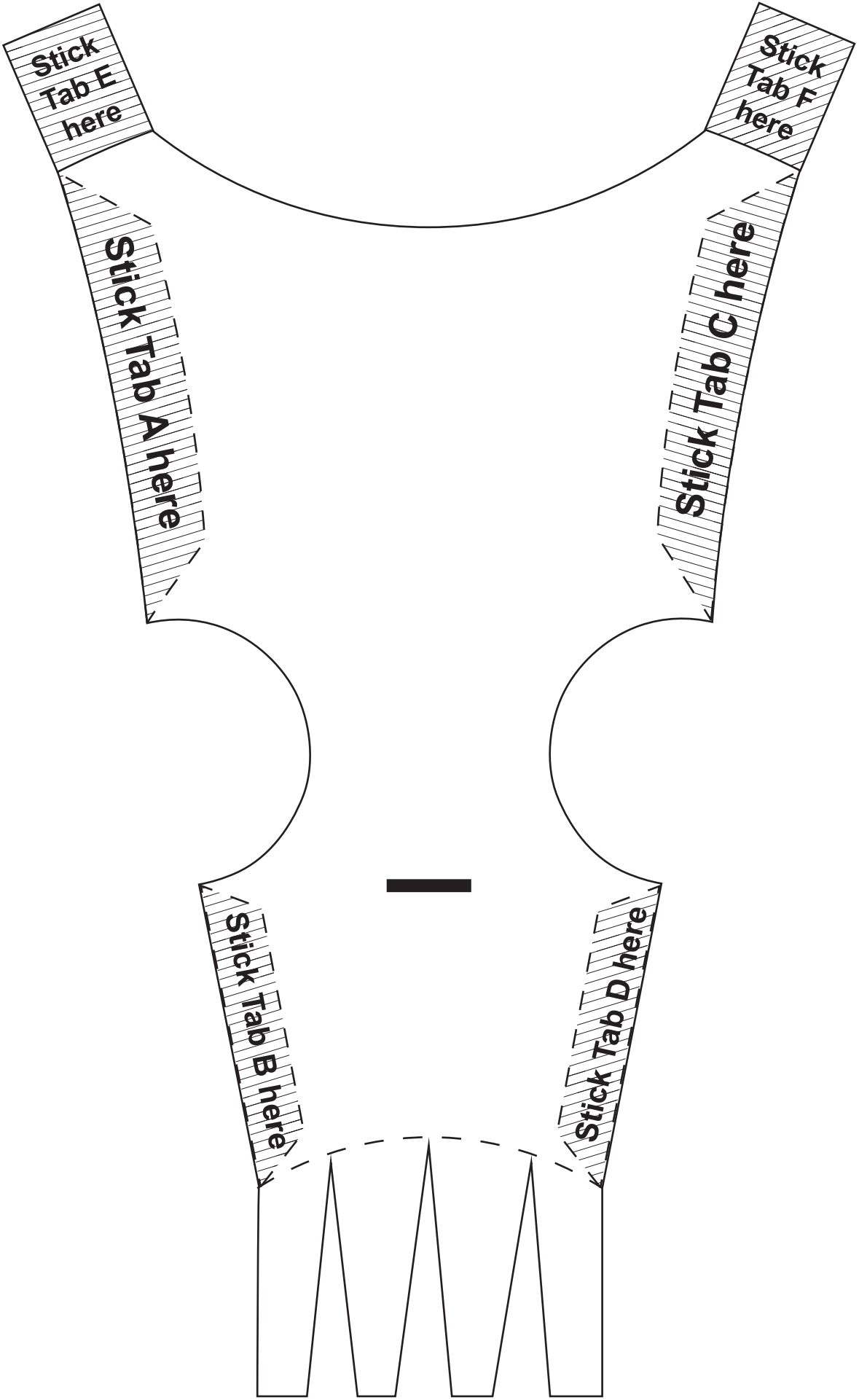
Tab B

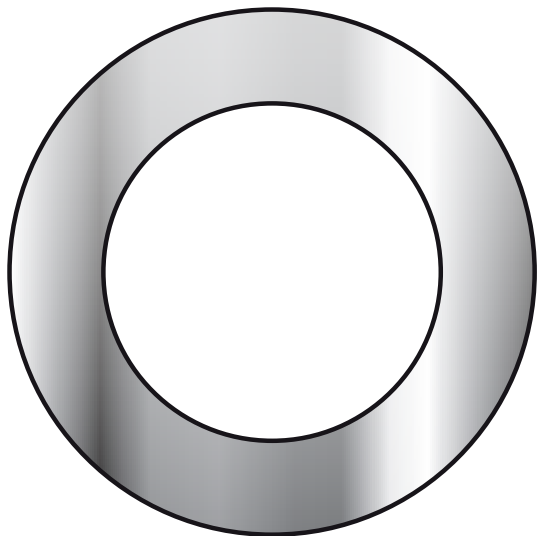
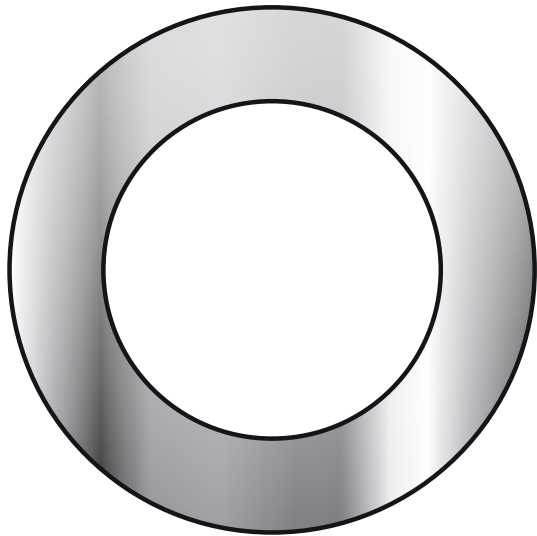
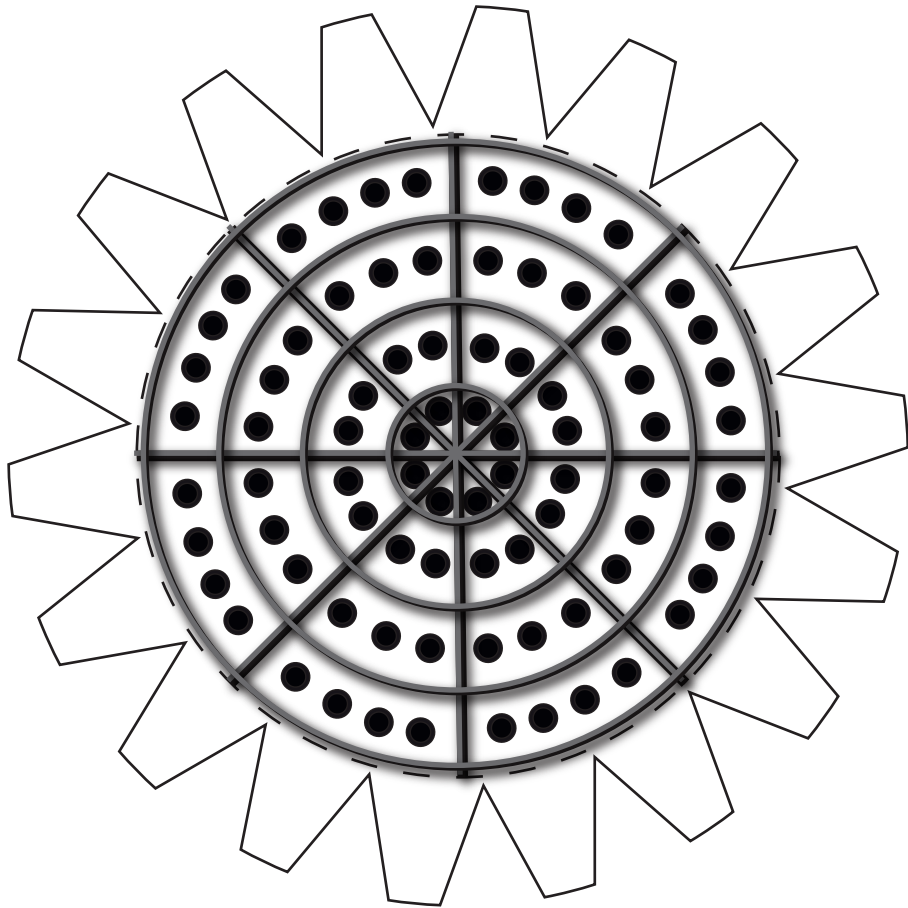
Tab  
E

Tab  
F









## World War Two – Evacuees

# For the Box

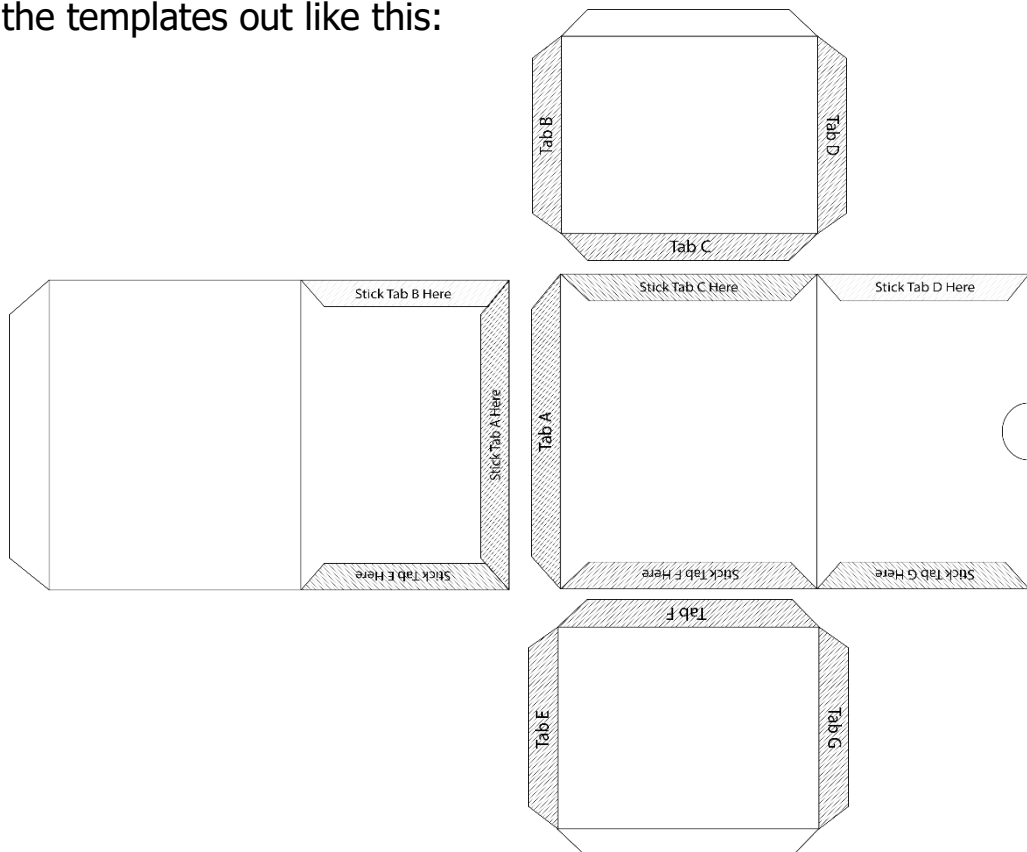
### You will need

- The templates attached
- Some thin cardboard
- Glue or sticky tape
- Scissors or a craft knife
- A ruler
- String



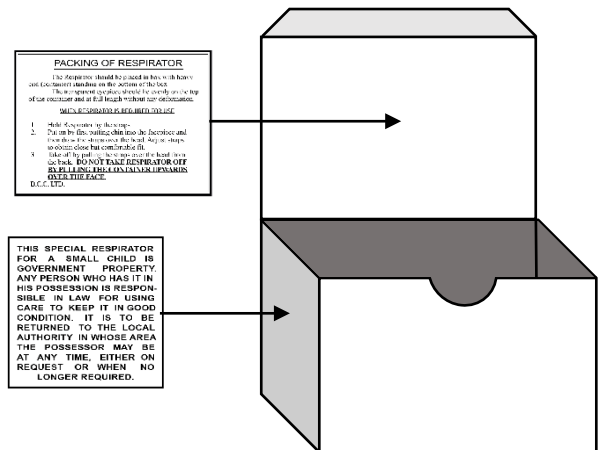
### Instructions:

- 1) Stick the templates to the cardboard and cut them out.
- 2) Lay the templates out like this:

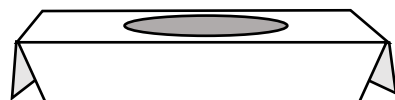
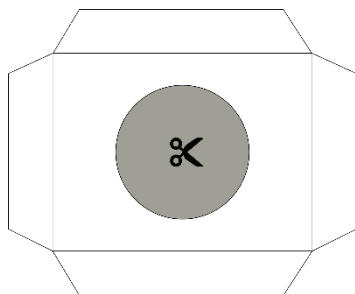


## World War Two – Evacuees

- 3) Using the ruler to keep the lines straight, score gently along all the lines with a pair of scissors, taking care not to cut all the way through the card.
- 4) Stick the tabs together according to the labels, folding the sides of the box as you go.
- 5) Stick the labels onto the box in the positions shown.

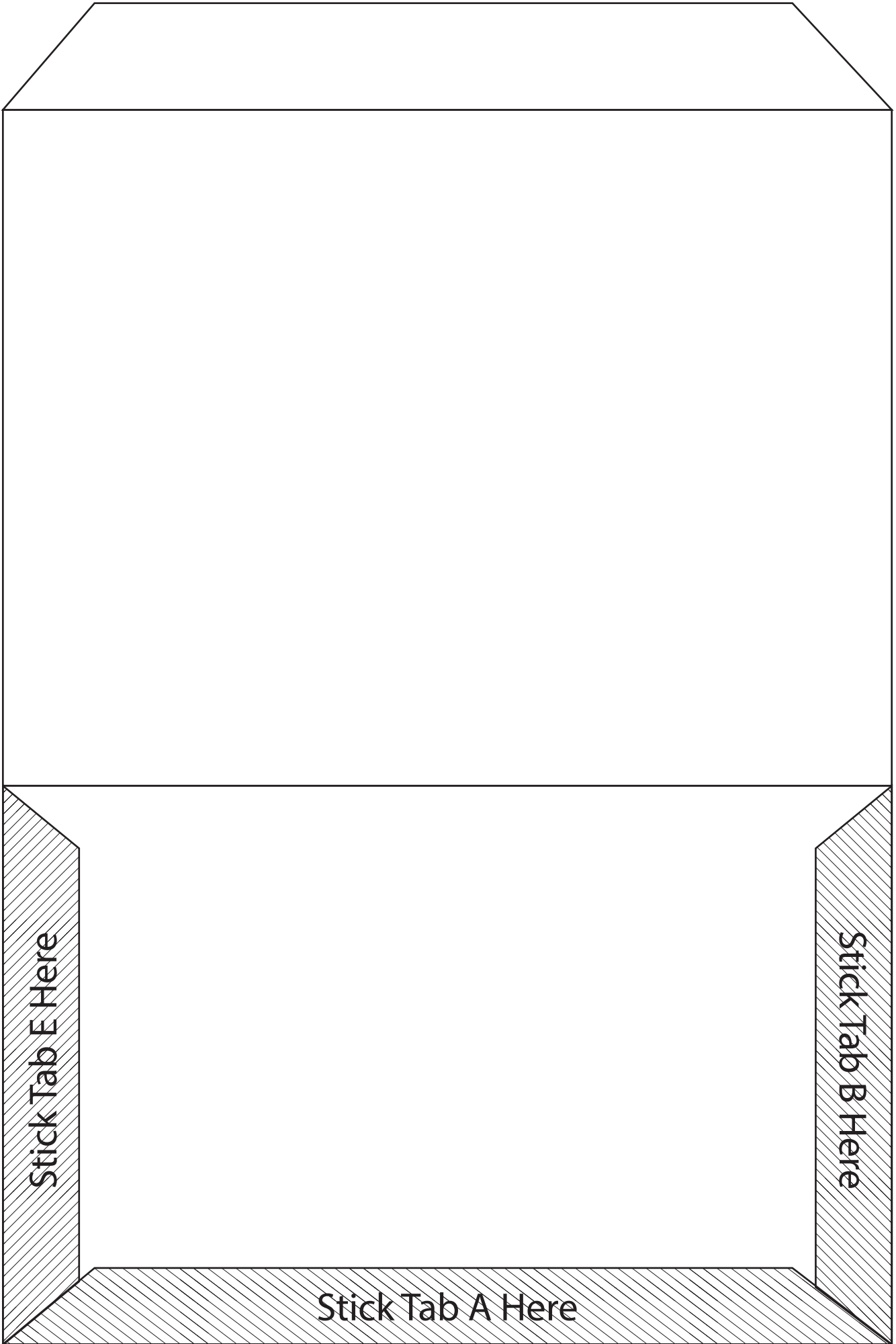


- 6) Fold the flaps down on the inner piece so that it stands like a table. Insert the inner into the box and push it right down.



- 7) Cut a piece of string long enough to loop over your head and shoulders. Make two small holes in the sides of the box and thread the string through as a carrying strap.
- 8) If you have made your gas mask from felt, you should be able to fit it into the box and carry it safely around with you!





Stick Tab E Here

Stick Tab B Here

Stick Tab A Here

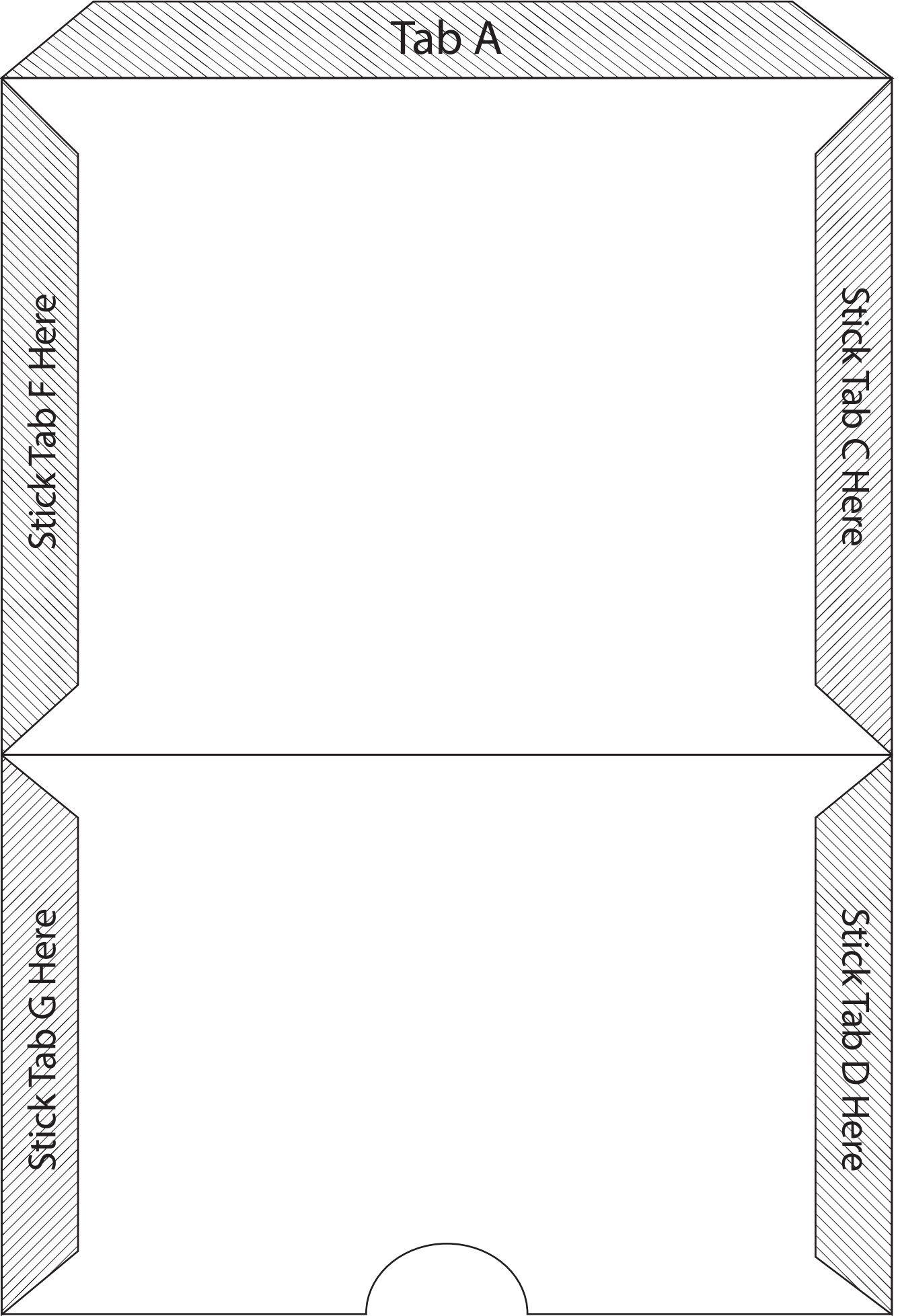
Tab A

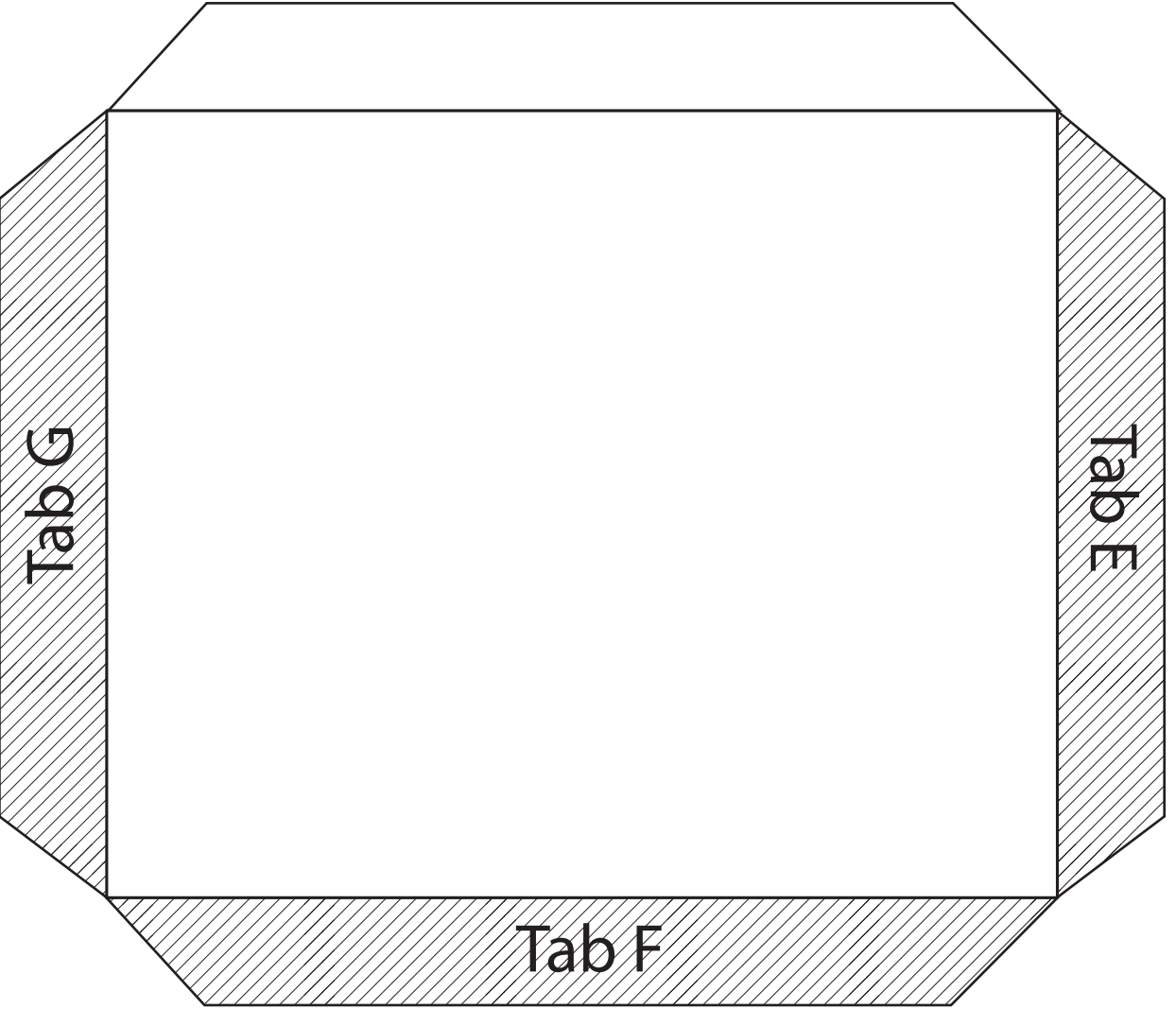
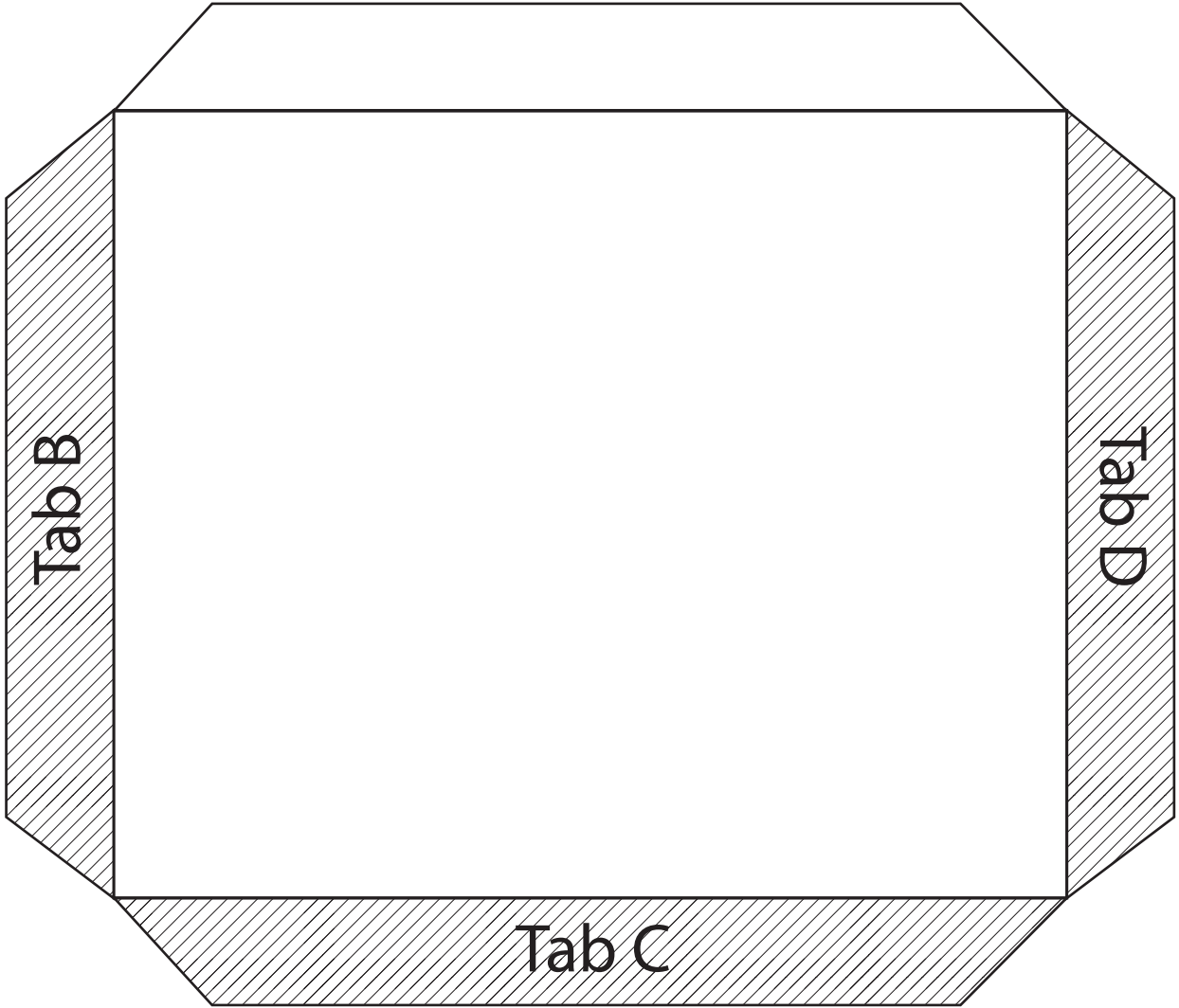
Stick Tab F Here

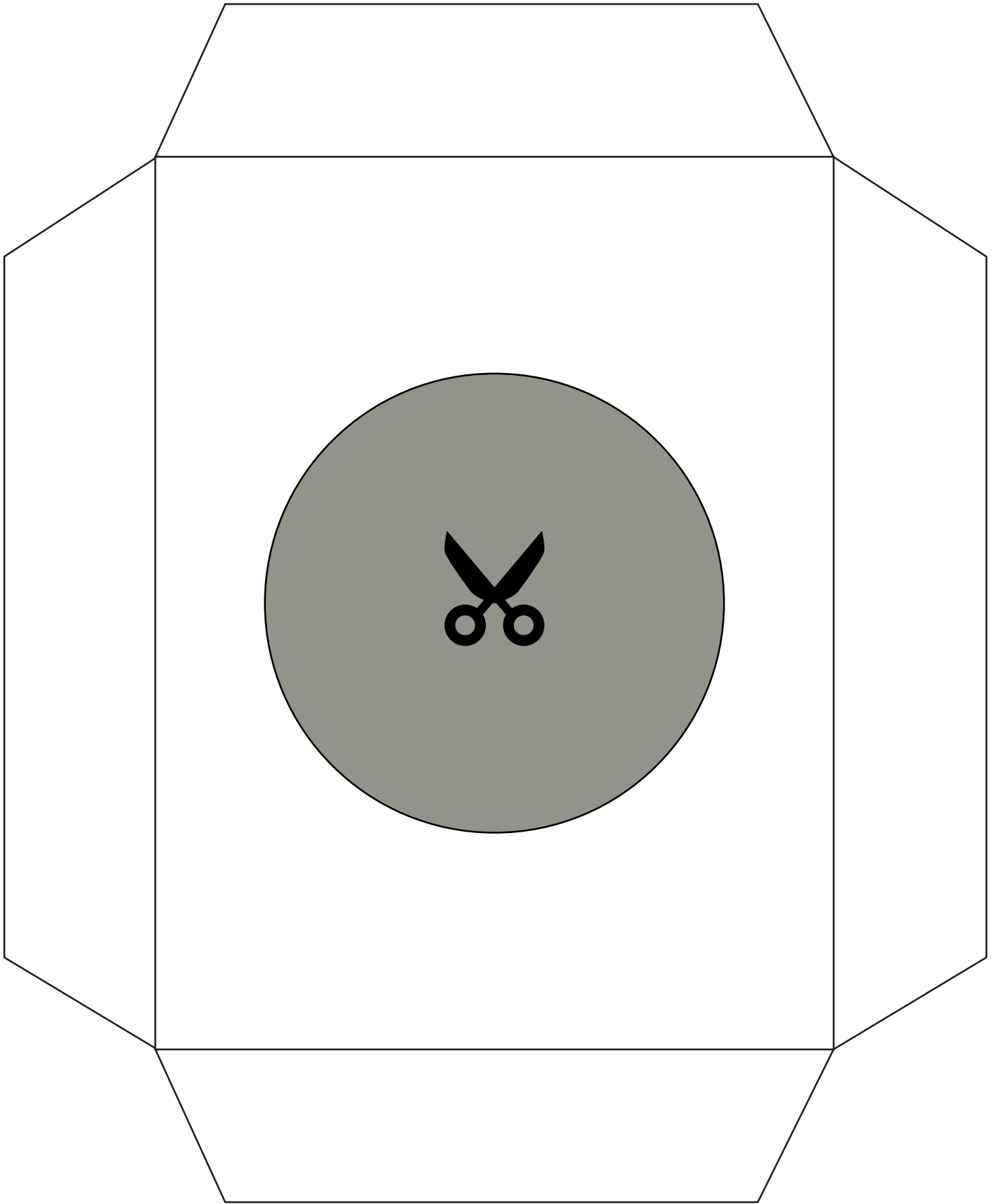
Stick Tab C Here

Stick Tab G Here

Stick Tab D Here







## PACKING OF RESPIRATOR

The Respirator should be placed in box with heavy end (container) standing on the bottom of the box

The transparent eyepiece should lie evenly on the top of the container and at full length without any deformation.

### WHEN RESPIRATOR IS REQUIRED FOR USE

1. Hold Respirator by the straps.
2. Put on by first putting chin into the facepiece and then draw the straps over the head. Adjust straps to obtain close but comfortable fit.
3. Take off by pulling the straps over the head from the back. **DO NOT TAKE RESPIRATOR OFF BY PULLING THE CONTAINER UPWARDS OVER THE FACE.**

B.C.C. LTD.



**THIS SPECIAL RESPIRATOR FOR A SMALL CHILD IS GOVERNMENT PROPERTY. ANY PERSON WHO HAS IT IN HIS POSSESSION IS RESPONSIBLE IN LAW FOR USING CARE TO KEEP IT IN GOOD CONDITION. IT IS TO BE RETURNED TO THE LOCAL AUTHORITY IN WHOSE AREA THE POSSESSOR MAY BE AT ANY TIME, EITHER ON REQUEST OR WHEN NO LONGER REQUIRED.**